

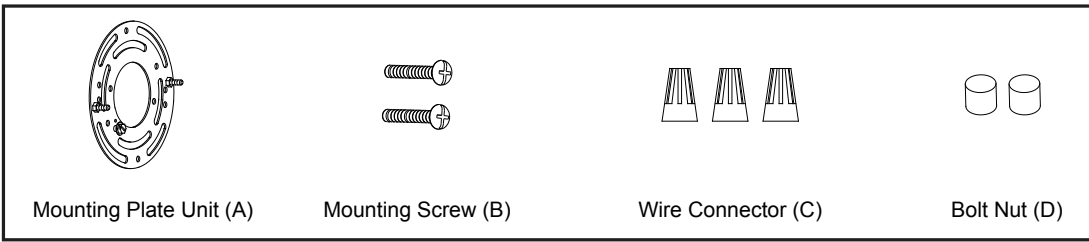
ASSEMBLY AND INSTALLATION INSTRUCTIONS

W0383

WARNING: TO AVOID RISK OF ELECTRICAL SHOCK, BE SURE TO SHUT OFF POWER WHILE INSTALLING OR SERVICING THIS FIXTURE.

NOTE: 1. Before installing, consult local electrical codes for wiring and grounding requirements.
2. READ AND SAVE THESE INSTRUCTIONS.

Hardware Package (included):



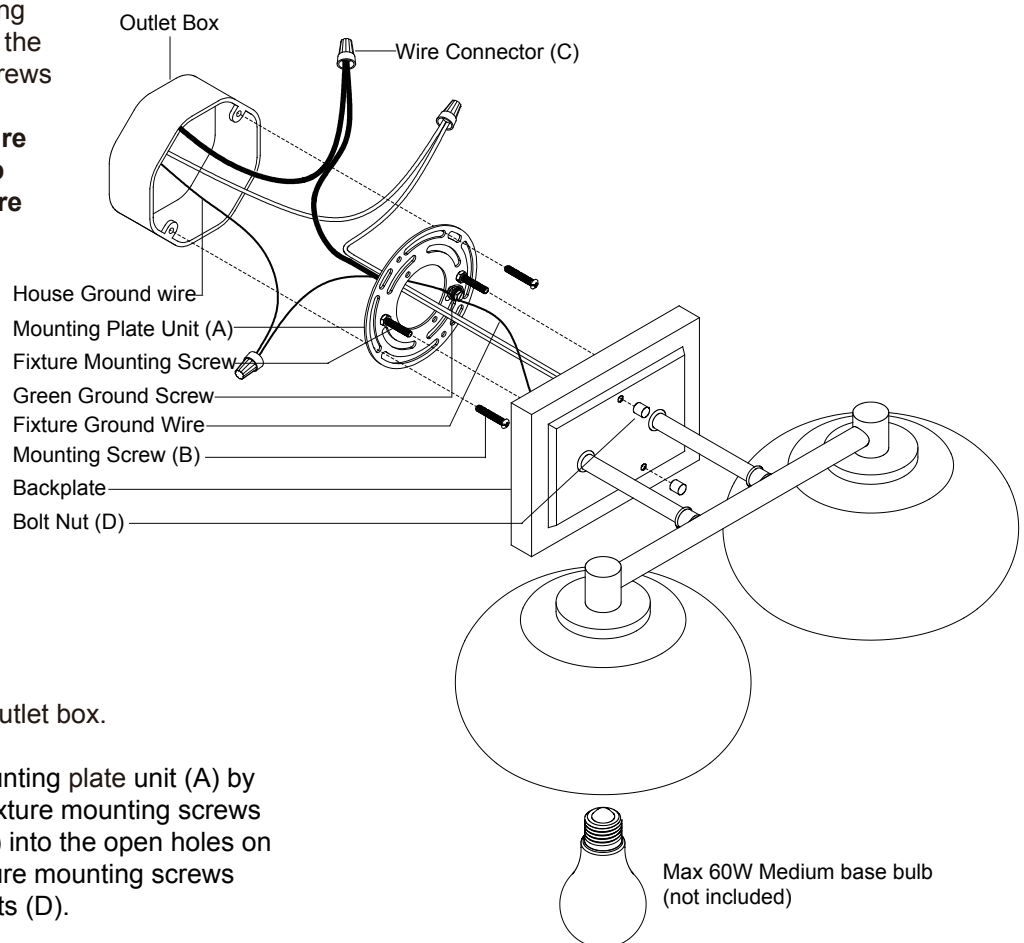
Installation Steps

Turn off the power at fuse or circuit box

1. Attach mounting plate unit (A) to the outlet box using two mounting screws (B). Adjust the length of the preinstalled fixture mounting screws if necessary.

Note: Make sure that the fixture mounting screws are lined up horizontally to make the fixture level.

2. Connect the smooth wire (marked) to black wire (power), the ribbed wire (unmarked) to white wire (neutral) with the wire connectors (C) provided. Connect the copper wire on the light fixture to the mounting plate unit (A) by securing it with the green ground screw, then connect it to the house ground wire with wire connectors (C). Carefully put all the wires into outlet box.

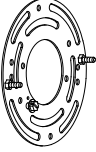

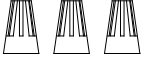



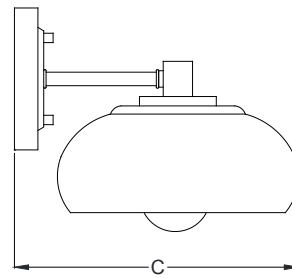
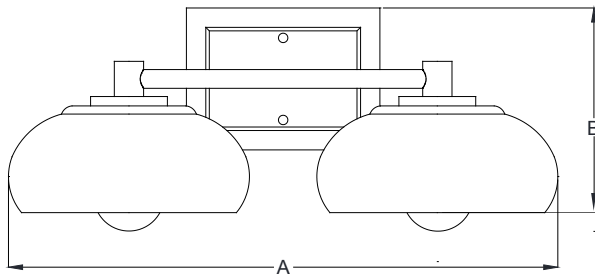
3. Attach the backplate to the mounting plate unit (A) by aligning and inserting the two fixture mounting screws from the mounting plate unit (A) into the open holes on the backplate, then expose fixture mounting screws before screwing the two bolt nuts (D).
4. Install 2 X 60W medium base bulbs (not included). See relamping label at socket area or packaging for maximum wattage allowed.

Turn on the power at fuse or circuit box.

The following parts are available for re-order if damaged or missing.

Spare Parts List:

				→ Assembly Kit 6341MM (1 SET)
Mounting Plate Unit (A)	Mounting Screw (B)	Wire Connector (C)	Bolt Nut (D)	



A: 18-1/2"

B: 7"

C: 9-1/2"